

# Asset Optimization Breaker Performance

Increase safety and power availability  
with predictive maintenance

The Breaker Performance Module allows you to address safety concerns and save money by providing actionable information on your low voltage circuit breakers.

## Address plant safety

- Ensure proper breaker operation and fault isolation
- Schedule maintenance before safety hazards occur

## Save time and money

- Perform maintenance based on the condition of the breaker; shut down only where and when you need
- Avoid unnecessary downtime by servicing breakers that have highest probability of failure
- During scheduled outages, focus on breakers in need of service
- Minimize inventory by ordering parts when you need them

Switchgear equipment failures account for

# 69%

of financial losses due to lack of electrical maintenance

(CSA Z463-13 & FM Global)

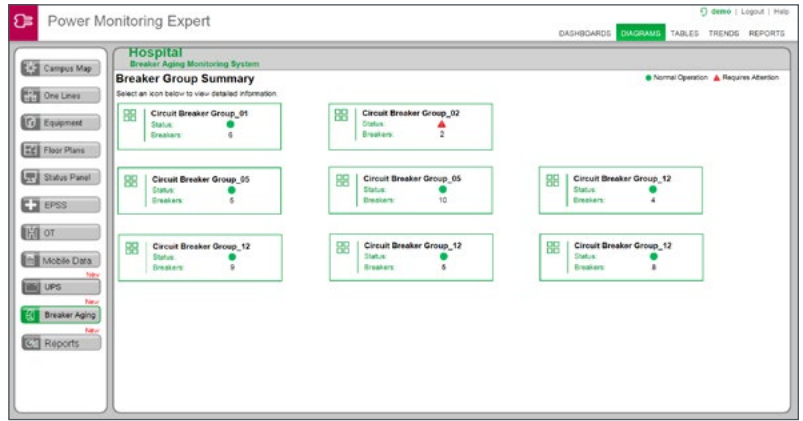
# \$365m

Gross losses adding up to \$365.4M in the US from 2001-2011

(CSA Z463-13 & FM Global)

## Features

- Electrical Aging – based on number of operations and profile
- Electrical Wear – based on number of operations and environmental conditions
- Breaker aging calculations and detailed reports are based on specific aging categories:
  - Electrical wear
  - Mechanical wear and stress
  - Environmental aging – temperature, vibration and corrosion
  - Control unit thermal aging – temperature
  - Control unit corrosion aging – humidity, corrosive gas and salt in the atmosphere



## Supported Devices

Market	Circuit Breakers Range	Control Unit Range
IEC	<ul style="list-style-type: none"> <li>• Masterpact NT</li> <li>• Masterpact NW</li> <li>• Compact NS630b-3200</li> </ul>	<ul style="list-style-type: none"> <li>• Micrologic 2 A/E</li> <li>• Micrologic 5 A/E/P/H</li> <li>• Micrologic 6 A/E/P/H</li> <li>• Micrologic 7 A/P/H</li> </ul>
	Compact NSX	<ul style="list-style-type: none"> <li>• Micrologic 5 A/E</li> <li>• Micrologic 6 A/E-M</li> </ul>
China	Compact NS630b-1600	<ul style="list-style-type: none"> <li>• Micrologic 2 A</li> <li>• Micrologic 5 A</li> <li>• Micrologic 6 A</li> </ul>
	Masterpact MT	<ul style="list-style-type: none"> <li>• Micrologic 2 A</li> <li>• Micrologic 5 A/E/D/P/H</li> <li>• Micrologic 6 A/E/D/P/H</li> <li>• Micrologic 7 A/P/H</li> </ul>
	PowerPact H-, J-, D-Frame	<ul style="list-style-type: none"> <li>• Micrologic 2 A</li> <li>• Micrologic 5 A/E/D/P/H</li> <li>• Micrologic 6 A/E/D/P/H</li> <li>• Micrologic 7 A/P/H</li> </ul>
USA	<ul style="list-style-type: none"> <li>• Masterpact NT</li> <li>• Masterpact NW</li> <li>• Compact NS630b-3200</li> <li>• PowerPact P-, and R-Frame</li> </ul>	<ul style="list-style-type: none"> <li>• Micrologic 2 A</li> <li>• Micrologic 3 A</li> <li>• Micrologic 5 A/P/H</li> <li>• Micrologic 6 A/P/H</li> </ul>
	PowerPact H-, J-, and L-Frame	<ul style="list-style-type: none"> <li>• Micrologic 2 A</li> <li>• Micrologic 3 A</li> <li>• Micrologic 5 A/P/H</li> <li>• Micrologic 6 A/P/H</li> </ul>

## Breaker Performance Module available for Power Monitoring Expert and Power SCADA Operation

### Schneider Electric

35 rue Joseph Monier  
92500 Rueil-Malmaison, France  
Tel : +33 (0)1 41 29 70 00

[www.schneider-electric.com](http://www.schneider-electric.com)

©2016 Schneider Electric. All Rights Reserved.  
All trademarks are owned by Schneider Electric Industries SAS or its affiliated companies.