

# I STANDALONE CONTROLLER



## Face Recognition and Fingerprint Identification Standalone Controller

### XO2000

- Embedded Web Server
  - Various configuration setting via web
  - Operation without installation of Management Software
- PoE (Power over Ethernet)
- Communication via Ethernet (PoE) / RS485 / RS232 / Wi-Fi (Optional)
- 4-State Supervised Input (On/Off/Short/Cut)
- Built-in USB Port, Camera & DVR Interface (DVR 3-Pin Connector Included)
- Face Registration : 1,000 Users
- Fingerprint Registration : 5,000 Users
- Users / Event Buffers : 100,000 Users / 500,000 Events
  - **XO2000** : 125KHz (PSK Format/IDC Type)RF Card or PIN+PW+Face+Fingerprint
  - **XO2000SR** : 13.56MHz (MIFARE, ISO14443 Type A) SMART Card or PIN+PW+Face+Fingerprint



XO2000

#### Embedded Web Server

- ID Registration up to 100,000 Users / Event view to 500,000 Events
- Device LCD Setting (Logo TEXT, Notice , ID Display, Name Display, ID OK Message TEXT, ID Error Message TEXT )
- Time & Attendance Button Setting / Time & Attendance button Time Report
- Duress Mode / Anti-Passback / 2 Men Operation
- Arm/Disarm Management / Audible Alarm Setting / One Time Read
- Work Time Setting / Work Holiday Definition / Overtime Work Management

## WiFi & Embedded Web Server · PoE Fingerprint Identification Standalone Controller

### XO1000

- Embedded Web Server
  - Various configuration setting via web
  - Operation without installation of Management Software
- PoE (Power over Ethernet)
- Communication via Ethernet (PoE) / RS485 / RS232 / Wi-Fi (Optional)
- 4-State Supervised Input (On/Off/Short/Cut)
- Built-in USB Port, Camera & DVR Interface (DVR 3-Pin Connector)
- Fingerprint Registration : 5,000 Users
- Users / Event Buffers : 100,000Users / 500,000 Events
  - **XO1000** : 125KHz (PSK Format/IDC Type) RF (PIN / Fingerprint), RF(PIN)+Password/Fingerprint, or RF(PIN)+Password+Fingerprint
  - **XO1000SR** : 13.56MHz (MIFARE, ISO14443 Type A) SMART Card (PIN/Fingerprint), SMART Card (PIN) + Password/Fingerprint, or SMART Card (PIN) + Password + Fingerprint



XO1000

# STANDALONE CONTROLLER



## Built-In Camera · PoE Fingerprint Identification Standalone Controller

### MAC1000

- Communication via Ethernet (PoE) / RS485 / RS232 / Wi-Fi (Optional)
- Built-in USB Port, Camera, & DVR interface
- PoE (Power over Ethernet)
- Videophone Interface Capable
- Fingerprint Registration : 25,000 Users
- Users / Event Buffers : 100,000 Users / 500,000 Events
- **MAC1000** : 125KHz (PSK Format/IDC Type) RF (PIN) Only, Fingerprint Only, RF(PIN) + Password, RF(PIN) + Password + Fingerprint
- **MAC1000SR** : 13.56MHz (MIFARE, ISO14443 Type A) Smart Card(PIN) Only, Fingerprint Only, SMART Card(PIN) + Password/Fingerprint, or SMART Card(PIN)+Password+Fingerprint
- **MAC1000SRS** : 13.56MHz SMART Card Reader IDTECK Credential Format



MAC1000

## Versatile Interface Fingerprint Standalone Controller(Fingerprint / PIN / RFID)

### LX007

- Professional Time & Attendance
- Multi-Language and Voice Support
- 12 Function Keys for Various T&A Applications
- 3-Status Input Check (On/Off/Cut)
- Allows Registration of 10 Administrators Using the Fingerprint
- Communication via Ethernet / RS485 / RS232
- Users / Event Buffers : Up to 20,000 Users / Up to 20,000 Events
- **LX007** : 125KHz (PSK Format/IDC Type): RF(Fingerprint), RF +Password/Fingerprint, or RF+Password+Fingerprint
- **IP-LX007** : 125KHz (ASK [EM]Format) RF(PIN/Fingerprint), RF(PIN)+Password/Fingerprint, or RF(PIN)+Password+Fingerprint
- **LX007SR** : 13.56MHz (MIFARE, ISO14443 Type A) SMART Card(PIN/Fingerprint), SMART Card(PIN)+Password/Fingerprint, or SMART Card (PIN)+Password+Fingerprint
- **LX007SRS** : 13.56MHz SMART Card Reader IDTECK Credential Format



LX007

## Multi-Layered Security Fingerprint Standalone Controller (Fingerprint / PIN / RFID)

### FINGER007

- Time Schedule Setting
- Fingerprint Identification without using any cards or keypads.
- Anti-Pass Back Mode
- RS232, RS422, RS485, TCP/IP(Optional) Communication
- Users / Event Buffers : Up to 50,000 Users / Up to 50,000 Events
- **Finger007** : 125KHz (PSK Format/IDC Type): RF(PIN/Fingerprint), RF(PIN)+Password/Fingerprint, or RF (PIN)+Password+Fingerprint
- **IP-Finger007** : 125KHz (ASK [EM]Format) RF(PIN/Fingerprint), RF(PIN)+Password/Fingerprint, or RF (PIN)+Password+Fingerprint
- **Finger007SR** : 13.56MHz (MIFARE, ISO14443 Type A) SMART Card(PIN/Fingerprint), SMART Card(PIN)+Password/Fingerprint, or SMART Card (PIN)+Password+Fingerprint
- **Finger007SRS** : 13.56MHz SMART Card Reader IDTECK Credential Format



Finger007

# I STANDALONE CONTROLLER



## Comfortable & Easy Interface

RFID Standalone / Network Controller (RFID/ PIN)

### LX505

- Graphical LCD
- Multi-Language and Voice Support
- 12 Function Keys for Various Time & Attendance Applications
- 3-Status Input Check (On/Off/Cut)
- Communication via Ethernet / RS485 / RS422 / RS232
- Users / Event Buffers : Up to 20,000 Users / Up to 20,000 Events
  - **LX505** : 125KHz (PSK Format/IDC Type): RF(PIN) or RF(PIN)+Password
  - **IP-LX505** : 125KHz (ASK [EM]Format) RF(PIN) or RF(PIN)+Password
  - **LX505SR** : 13.56MHz (MIFARE, ISO14443 Type A) SMART Card(PIN) or SMART Card(PIN)+Password
  - **LX505SRS** : 13.56MHz SMART Card Reader IDTECK Credential Format



LX505

## Affordable · Stability · Security

RFID Standalone / Network Controller (RFID/ PIN)

### 505R

- Time Schedule Setting
- Operation Mode selectable according to user environment
- Anti-Pass Back Mode
- RS232, RS422, RS485, TCP/IP(Optional) communication
- Users / Event Buffers : Up to 50,000 Users / Up to 50,000 Events
  - **505R** : 125KHz (PSK Format/IDC Type): RF(PIN) or RF(PIN)+Password
  - **IP-505R** : 125KHz (ASK [EM]Format) RF(PIN) or RF(PIN)+Password
  - **SR505** : 13.56MHz (MIFARE, ISO14443 Type A) SMART Card(PIN) or SMART Card(PIN)+Password
  - **SR505S** : 13.56MHz SMART Card Reader IDTECK Credential Format



505R

# STANDALONE CONTROLLER



## Vandal Resistance

### Proximity Standalone Controller (RFID/PIN)

#### 100RV/RFL200V

- Illuminated LED Touch Keypad (100RV)
- Suitable for Extremely Harsh Environments (IP-68, IK08, Full Epoxy-potted, Waterproof, Weatherproof)
- Unique Anti-Tamper Screw Protection
- One-Piece Design "Rugged, Compact, and Vandal Resistant"
- Material: Polycarbonate / Aluminum Die Casting
- Users : 512 Users



100RV



RFL200V

## Affordable · Stability

### Proximity Standalone Controller (RFID/PIN)

#### 100R

- Access Control in One Device
- All I/Os and Operation Time Programmable by Keypad
- Keypad Lock by Try-out Error Alarm Function
- Tamper Switch (2ea)
- Chime Bell Output
- Users : 512 Users
  - **100R** : 125KHz (PSK Format/IDC Type) RF(PIN) or RF(PIN)+Password
  - **IP-100R** : 125KHz (ASK [EM]Format) RF(PIN) or RF(PIN)+Password



100R

## Easy Installation

### Proximity Standalone Controller (RFID)

#### RFL200/RFL200C

- **RFL200** - Standalone / Non-Network Controller (RFID)
- **RFL200C** - Standalone / Network Controller (RFID) / RS485 Communication
- Door Lock Type Selectable
  - Power Fail Safe/Power Fail Secure
- Available for Outdoor Installation
  - Epoxy Molding / Outdoor Capacity : IP66 / IK06
- Device Information and Operation Status Display via Nine LED and Buzzer
- RFL200/RFL200C - 512 users
  - **RFL200(C)** : 125KHz (PSK Format/IDC Type) RF Card
  - **IP-RFL200(C)** : 125KHz (ASK [EM]Format) RF Card



RFL200

RFL200C

# FINGERPRINT READER



## Versatile Interface

Fingerprint Reader (Fingerprint / RFID)

### LX006

- Operation Mode (RF, Fingerprint, RF+Fingerprint) Switches Over Automatically According to the Time Schedule Configured on the Controller
- Voice Guide Output and Multi-Language Support
- Supervisory Signal Transmission for Device Operation Status Check (Optional)
- TCP/IP, Wiegand, RS232, RS485 Communication
  - LX006 : 125KHz (PSK Format/IDC Type) RF, RF+Fingerprint
  - LX006SR : 13.56MHz (MIFARE, ISO14443 Type A Compatible) SMART Card(Fingerprint), SMART Card+Fingerprint
  - LX006SRS: 13.56MHz SMART Card Reader IDTECK Credential Format



LX006

## Multi Layered Security

Fingerprint RF Reader (Fingerprint / RFID)

### FINGER 006

- Time Display on LCD
- Wiegand, RS232, RS422, RS485, TCP/IP (Optional) Communication
  - FINGER006 : 125KHz(PSK Format/IDC Type) RF(PIN or Fingerprint), RF(PIN)+Password, RF(PIN)+ Fingerprint, RF(PIN)+Password+Fingerprint
  - IP-FINGER006 : 125KHz(ASK [EM]Format) RF(PIN or Fingerprint), RF(PIN)+Password,RF(PIN)+ Fingerprint, RF(PIN)+Password+Fingerprint
  - FINGER006SR : 13.56MHz(MIFARE, ISO14443 Type A Compatible) SMART Card(PIN or Fingerprint), SMART Card(PIN)+Password, SMART Card(PIN)+Fingerprint, or SMART Card(PIN)+Password+Fingerprint
  - FINGER006SRB : Fingerprint Stored 13.56MHz SMART Card(PIN or Fingerprint), SMART Card(PIN)+Password, SMART Card(PIN) + Fingerprint, or SMART Card(PIN)+Password+Fingerprint



FINGER006

## High Compatibility

Fingerprint RF Reader (Fingerprint / RFID)

### FGR006

- Supervisory Signal Transmission for Device Operation Status Check (Optional)
- Wiegand, RS232, RS422, RS485, TCP/IP (Optional) Communication
  - FGR006 : 125KHz (PSK Format/IDC Type) RF, RF+Fingerprint
  - IP-FGR006 : 125KHz (ASK [EM] Format) RF, RF+Fingerprint
  - FGR006SR : 13.56MHz (MIFARE, ISO14443 Type A Compatible) SMART Card(Fingerprint), SMART Card + Fingerprint
  - FGR006SRB : Fingerprint Stored 13.56MHz SMART Card(Fingerprint), SMART Card + Fingerprint



FGR006

# PROXIMITY READER SERIES



## Easy Installation / Lifetime Warranty / Weatherproofed

### RF TINY/RF10/RF20/RF30

- Lifetime Warranty
- IP66 / IK06 Rating
- Easy install on door frame(RF10 / RF TINY)
- Wall mount (RF20, RF30)
- Read Range
  - **RF Tiny / RF10 / RF20**  
IDC80 : Up to 4 inches (10cm)  
IDC170 : Up to 4 inches (10cm)
  - **RF30**  
IDC80 / IDC170 Up to 12 inches (30cm)



### PROX10 / PROX10H

- **PROX10** : 125KHz Proximity Reader [IDC& Indala Format]
- **PROX10H** : 125KHz Proximity Reader [IDC, Indala & HID Format]
- Life Time Warranty
- IP66 / IK06 Rating
- Easy Install on door Frame
- Read Range
  - **IDC80** : Up to 4 inches (10cm)
  - **IDC170** : Up to 4 inches (10cm)



PROX10/PROX10H

### RFK101

- 12 Numeric Keypads with Back Lighting
- Wall Mount (US, EU, Asian Gang Box Size)
- Reverse Polarity Protection
- Read Range : IDC80 / IDC170 Up to 4 inch (10cm)
- Operation Mode (RF Card or PIN+PW)



RFK101

### RFK505

- Fast Identification Speed
- User Defined format Available
- 16 Numeric Keypads with Back Lighting
- Wall Mount (US, EU, Asian Gang Box Size)
- Read Range : IDC80 / IDC170 Up to 4 inch (10cm)



RFK505

## Easy Installation / Lifetime Warranty / Weatherproofed

### IP10 / IP20 / IP30

- ASK[EM] Format Card Reader
- [Lifetime Warranty](#)
- [IP66 / IK06 Rating](#)
- Easy install on door frame (IP10)
- Wall mount (IP20, IP30)
- Read Range
  - **IP10 / IP20**  
IPC80 : Up to 4 inches (10cm) IPC170 :  
Up to 4 inches (10cm)
  - **IP30**  
IPC80 / IPC170 : Up to 4 inches (30cm)



### IPK101

- ASK[EM] Format Card Reader
- [12 Numeric Keypads](#) with Back Lighting
- Wall Mount (US, EU, Asian Gang Box Size)
- Reverse Polarity Protection
- Read Range : IPC80 / IPC170 Up to 4 inches (10cm)
- Operation Mode (RF Card or PIN+PW)



### IP100

- ASK[EM] Format Card Reader
- [Long Range Proximity Reader](#)
- Best solution for Access Control (Hands free) and Detection of Vehicles in Parking Lanes with One Card System
- [Indoor / Outdoor Operation](#) (Epoxy molded)
- [IP66 / IK06 Rating](#)
- Read Range  
IPC100 : Up to 3.3 feet (1m)  
IPC200 : Up to 1.7 feet (50cm)



# SMART CARD READER SERIES



## High Compatibility / Strengthened Security / Various Applications

- SR Series** - High Compatible with ISO14443 Type A, MIFARE Classic, MIFARE Plus, MIFARE Desfire, MIFARE Ultra light  
 - Identifies UID/CSN Read Only 4byte (7byte Optional)  
 - High Compatibility with Existing Smart Card  
 - Can be used as Transit Card, E-Commerce, Student ID Card, Bank Credit Card and etc. (SR10 & SR10E(ISO14443 Type A/B), SR30, SRK505, SRK101)
- SRS Series** - Security is Strengthened as Access Key Encrypted by the User or IDTECK is Used in Writing the ID Number on Certain Sector and Block: IDTECK Credential Format (SR10S, SR10ES, SR30S, SRK505S, SRK101S)
- SRB Series** - Security is Maximized as the Fingerprint is Stored in the Card, not in the Device  
 → In case the Card is Lost, No need to worry for the Fingerprint stored in the SMART Card is only used to Identify the User and Password (SR10B, SR10EB, SR30B, SRK101B)
- SR RW Series** - Read and Write on Card According to User's Preference  
 - Various Applications such as Access Control, Time & Attendance, Debt Meal, Vehicle Management and Other Applications with One Card (SR10RW, SR10ERW, SRK101RW)

### SR10/SR30 Series

- 3 Array LED Indicators (Red and Green) and Beeper
- Identifies UID 4byte (7byte - Optional)
- **SR10 Series** - Easy install on door frame
- **SR30 Series**- Wall Mount (US, EU, Asian Gang Box Size)
- **SR10E** - Epoxy-Potted Smart Card Reader (IP66 / IK06)



SR10  
SR10S  
SR10B  
SR10RW



SR30  
SR30S  
SR30B  
SR30RW

### SRK505/SRK101 Series

- Wall Mount (US, EU, Asian Gang Box Size)
- Tamper Switch (2 EA)
- **SRK505** - Time Display on LCD
- Supervisory Signal Transmission for Device Operation Status Check (Optional)



SRK505



SRK101  
SRK101S  
SRK101B  
SRK101RW

### SR10M / SR10F

- Compatible Card Format
  - SR10M : **(UID/CSN Read Only)**  
 Mifare Classic, Mifare Plus, Mifare Ultra light  
 Mifare DesFire, ISO14443 Type-A & Type-B  
 NFC Compatible (Smart Phones) EZLINK
  - SR10F : **(UID/CSN Read Only)**  
 Mifare Classic, Mifare Plus, Mifare Ultra light  
 Mifare DesFire, ISO14443 Type-A & Type-B  
 NFC Compatible (Smart Phones)  
 Felica, Octopus
- 4 x 2 Color LEDs and Beeper
- Identifies UID 4byte



SR10M / SR10F



# VANDAL RESISTANT READER SERIES



## Suitable for Extremely Harsh Environments

### RFK101V/SRK101V

- **RFK101V** - 125KHz Proximity Reader
- **SRK101V** - 13.56MHz Smart Card Reader
- Illuminated [LED touch keypad](#)
- Suitable for Extremely Harsh Environments ([IP68/IK08 Rating](#))
- [Unique Anti-Tamper Screw](#) Protection
- One-Piece Design "Rugged, Compact and Vandal Resistant"
- Material: Polycarbonate / Aluminum Die Casting
- Read Range
  - **RFK101V** - IDC80 / IDC170 Up to 3inch (7cm)
  - **SRK101V** - ISC80 Up to 3inch (7cm)



RFK101V  
SRK101V

### RF10V/SR10V/RF20V/SR30V

- **RF10V, RF20V** - 125KHz Proximity Reader
- **SR10V, SR30V** - 13.56MHz Smart Card Reader
- Suitable for Extremely Harsh Environments ([IP68/IK08 Rating](#))
- [Unique Anti-Tamper Screw](#) Protection
- **RF10V, SR10V** - Easy Install on Door Frame
- **RF20V, SR30V** - Wall Mount (US, EU, Asian Gang Box Size)
- Material: Polycarbonate / Aluminum Die Casting



RF10V  
SR10V



RF20V  
SR30V



Weatherproof



Waterproof



Vandal Resistant

# VEHICLE IDENTIFICATION READER & CARD

## 2.45GHz Long Range Standalone & Reader (Adjustable Reading Range of Up to 15M)

### Neo RF245 / Neo RF245S

- Various Reading Range Adjustable Up to 15m(50ft)
- Utilized Various Applications (Vehicle Control / Logistics Tracking / Personnel Tracking / Asset Tracking)
- Multiple Card/Tag Identification (Identifies 30 Cards per second)
- 90° One-Directional Antenna for Long Range Identification (360° Omni-Directional Antenna Selectable)
- By using the secured algorithms between the reader and the card, it offers encrypted card ID communication
- **Neo RF245** - Long Range Reader
- **Neo RF245S** - Long Range Standalone Reader (Users / Event Buffers : 5,000 Users / 5,000 Events )
- IP66 Rating / IK06



Neo RF245 / Neo RF245S

## 2.45GHz Long Range Card

### IDA245N

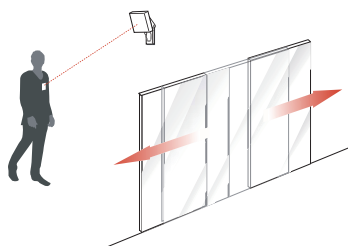
- Compatible with RF245 Readers
- User-Programmable Site Code & ID Number (Programmable with PRG245N)
- Attachable on Vehicle behind windshield or dashboard
- Lifetime Active Tags with Replaceable Battery CR2025
- **IDA245NH2** - Active Tag for a Car with Metal-Coated Windshield for ESD protection



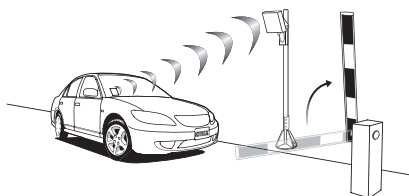
IDA245N

Card Holder

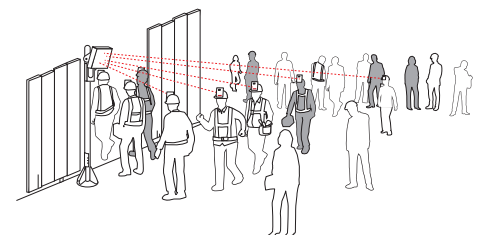
## Long Range System Applications



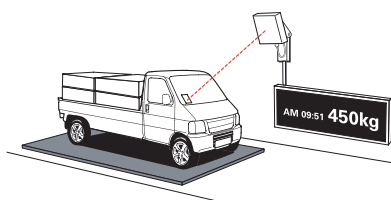
Long Range Access Control (Hands-Free)



Parking Control (Vehicle Access Control)



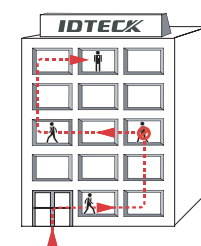
Time & Attendance on Construction Site



Logistics/Fleet Management (Weighing Solution)



Asset Tracking



Personnel Tracking

## Proximity Card & Tag

- **IDC80** - ISO Credit Card Size and Thickness  
- Allows for graphic printing on card
- **IDC170** - Clam Shell Proximity Card
- **IDK50** - Key Tag Type
- **LXK50** - Red LED Indicators when read
- **IMC125** - Easy to attach on Personal Belongings  
(MS / Barcode Card, Wallet, PDA, Cell Phone)
- **IDC80H** - HID Type  
ISO Credit Card Size and Thickness  
Allows for graphic printing on card
- **IDC170H** - HID Type  
- Clam Shell Proximity Card
- **IDK50H** - HID Type  
- Key Tag Type



IDC80



IDC170



IDK50



LXK50



IMC125

## Proximity Card & Tag-ASK[EM] Format

- **IPC80** - ISO Credit Card Size and Thickness  
- Printing Company Logo with Graphic
- **IPC170** - Clam Shell Proximity Card
- **IPK50** - Key Tag Type
- **IPC100/IPC200** - Long range Card

## Smart Card & Tag

- **ISC80** - ISO Credit Card Size and Thickness  
- Allows for graphic printing on card
- **ISC80S** - IDTECK Credential SRS Series Cards
- **ISK50** - Key Tag Type
- **IMC135** - Easy to attach on Personal Belongings  
(MS / Barcode Card, Wallet, PDA, Cell Phone)



ISC80/ISC80S



ISK50



IMC135

## Hybrid Card & Tag

- **Proximity + Smart Card**
  - **IHC80** : IDC type 125KHz + Mifare 13.56 MHz ISO type A
  - **HSC80** : HID type 125KHz + Mifare 13.56 MHz ISO type A
  - **EMC80** : 125KHz EM format + Mifare 13.56 MHz ISO type A
- **Long range + Proximity Card**
  - **IDA245N IDC Hybrid** : 2.45GHz + IDC type 125KHz
  - **IDA245N Indala Hybrid** : 2.45GHz + Indala type 125KHz
  - **IDA245N HID Hybrid** : 2.45GHz + HID type 125KHz
  - **IDA245N EM Hybrid** : 2.45GHz + 125KHz EM Format
- **Long range + Smart Card**
  - **IDA245N SR Hybrid** : 2.45GHz + Mifare 13.56 MHz



IHC80



IDA245N Hybrid