



Power Manager for SmartStruxure™ Solution

Presented by: Presenter's Name



Power consumption generates one of your largest building expenses, and is under increasingly rigorous regulations. Yet many companies have little-to-no visibility into their electrical network.

Furthermore, those building owners and managers who are energy-aware are often unable to manage or financially support numerous separate systems to monitor their power and building operations.

Now imagine that you could monitor, measure and optimize your building's non-critical power in the same way as your HVAC, lighting and fire safety—gaining insights through a single view that allow you to:

- > Ensure electrical network health
- > Increase power quality awareness
- > Improve energy accountability





Power Manager for SmartStruxure solution

Power Manager for SmartStruxure Solution

Is a power management module fully embedded to become part of the SmartStruxure solution building management system.

It is designed to help facility and building operators improve building energy performance, optimize maintenance staff effectiveness, and leverage fault diagnostics to prevent downtime and maintain power availability – all from a single system.



Power Manager for SmartStruxure Solution

Offers the simplicity, convenience and cost effectiveness of a single system to monitor both power *and* building operations

- Power Manager features are available through StruxureWare™ Building Operation software

Leverages Schneider Electric's strength and experience in power management

- Features and functionality address the customers who need more than our basic power meters, but do not require our StruxureWare Power Monitoring Expert (SPME) for buildings with critical power needs

An ideal upgrade for any site, including new buildings, existing SmartStruxure solution sites, or those transitioning to SmartStruxure solution

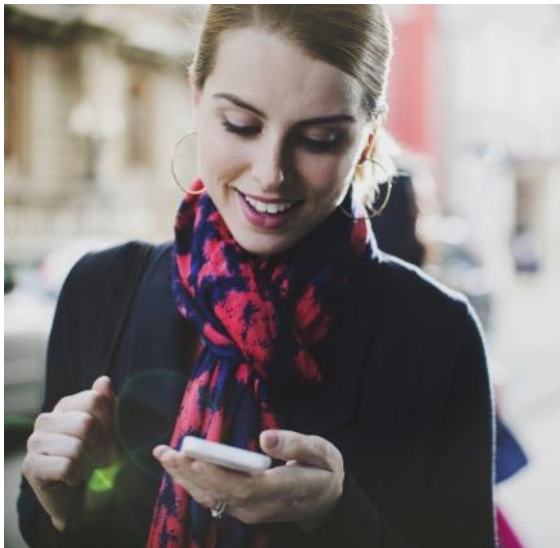


Power Manager provides actionable information to help:



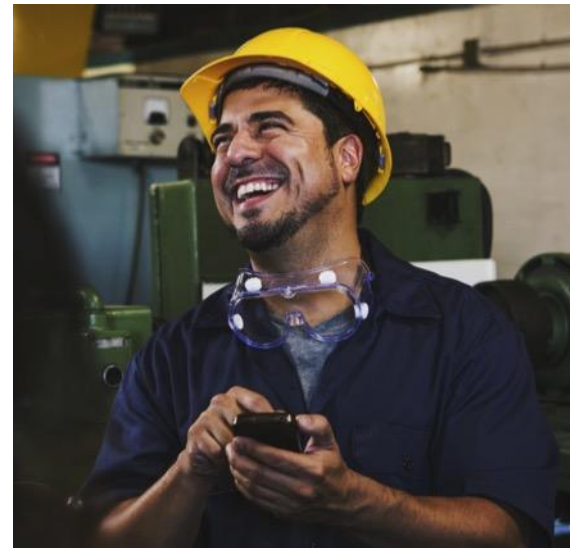
Ensure electrical network health:

- >Monitor electrical equipment and key capital assets
- >Improve response time to power related issues



Increase awareness of power quality:

- >Understand power factor, harmonics & voltage disturbances
- >Detect fault and diagnose key electrical problems



Improve energy usage accountability:

- >Track energy consumption and allocate costs
- >Achieve energy conservation objectives

Key feature: Comprehensive energy usage reports

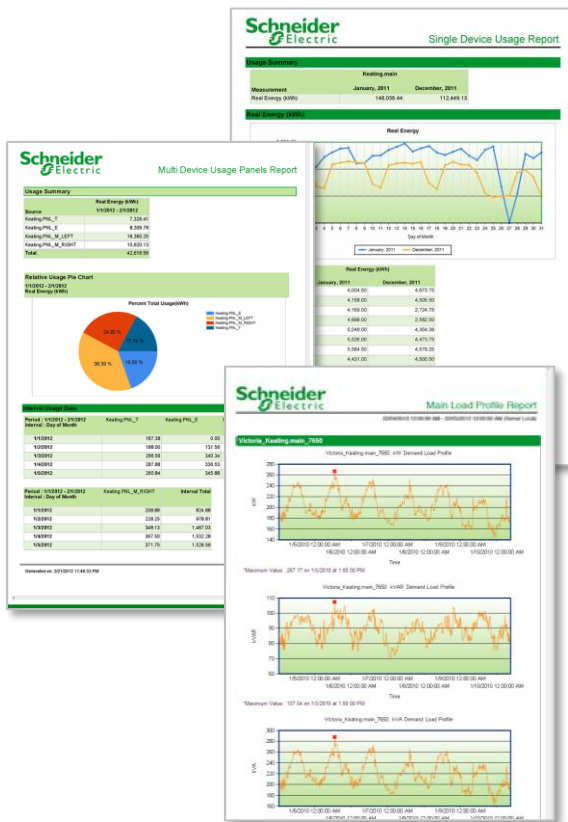
Powerful real time report engine with report templates

- Simple web user configuration to set up reports
- Automate reports to email on schedule
- Save reports as Excel, PDF, HTML or XML

Out-of-the-box report templates include:

- Energy Cost
- Energy Period Over Period
- Energy Usage By Shift
- Hourly Usage
- Load Profile
- Multi-Trend Report
- Multi Device Usage
- Single Device Usage
- Tabular and Trend
- System Configuration
- Consumption Ranking*
- Energy Comparison*
- Energy Usage (for Dashboard KPI's)*
- Energy Usage by TOU*
- Calendar View*

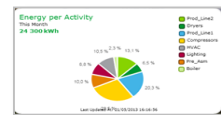
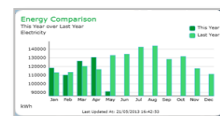
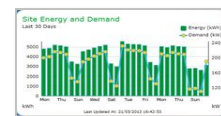
* New in Power Manager v1.2



Key feature: Attractive, configurable dashboards

Simple energy awareness views

- Quickly and easily make your own dashboards with “drag & drop” gadgets
- Display any unit (water, gas, electricity, GJ, MMBTU, Therms, etc.)
- Show energy usage comparisons, breakdowns or improvements
- Interactive date ranges for data “zoom in - zoom out”
- Use “Web Image Gadget “ to share website content, videos, images, pdf docs, etc. in your dashboard
- Supports automatic, unattended, full-screen slideshows on flat panels
- Energy Equivalency gadget to make data easily relatable.

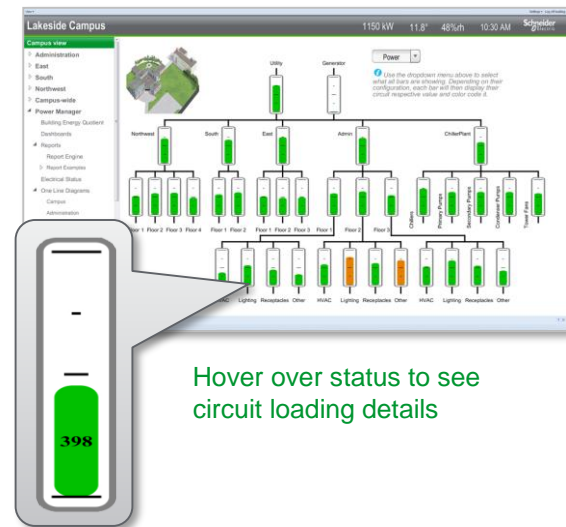


Key feature: Electrical network health summaries

View simple health status view of electrical system

- Indicates whenever there is an electrical problem
- “Zoom in” and “drill down” to quickly find out more information related to alarms

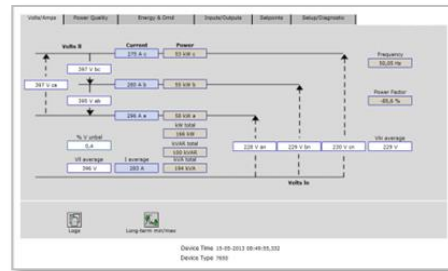
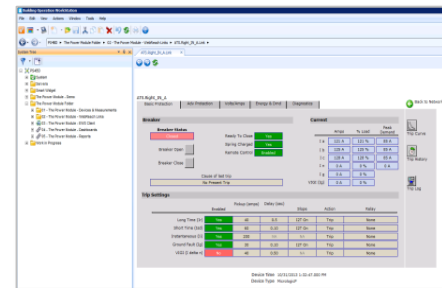
Use Power Manager graphics components to create custom electrical network health summary graphics for your site



Key feature: Direct access to power meter data

Pre-engineered power equipment screens via StruxureWare Building Operation WorkStation

- Comprehensive set of screens for power equipment such as power meters, breaker trip units and protection relays
- Access to real-time values, min/max values, alarms and historical data trends
- Support for hundreds of power meters, including third party equipment



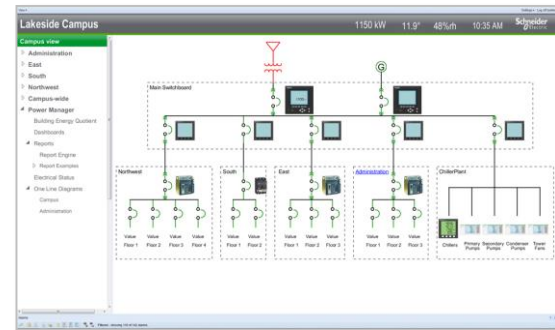
Key feature: Power system engineer views

One-line diagrams

- Animated breakers and color-animated bus bar
- Quickly find out more information related to alarms with “zoom in” and “drill down” navigation
- Link one-line graphics to power equipment diagram for more details

Power Manager graphics components to used to create custom electrical one-line diagram graphics

- Includes standardized electrical one-line symbols
- Includes snippets used to animate and color-code electrical diagram



In summary, Power Manager for SmartStruxure solution ...

Provides an easy-to-use, single view of power information through StruxureWare Building Operation software

Gain greater awareness and control of your electrical network to optimize uptime and building performance

- Visibility to energy usage and loads
- Real time power system data and alarms
- Better manage key capital assets

Based on Schneider Electric's proven power monitoring solutions



A group of four people (two men and two women) are sitting around a round glass table on a rooftop terrace. They are engaged in conversation and looking at a tablet. The background features a dense city skyline with various skyscrapers under a cloudy sky. The terrace has a metal railing and wicker chairs.

THANK YOU.

Life Is On



Schneider
Electric